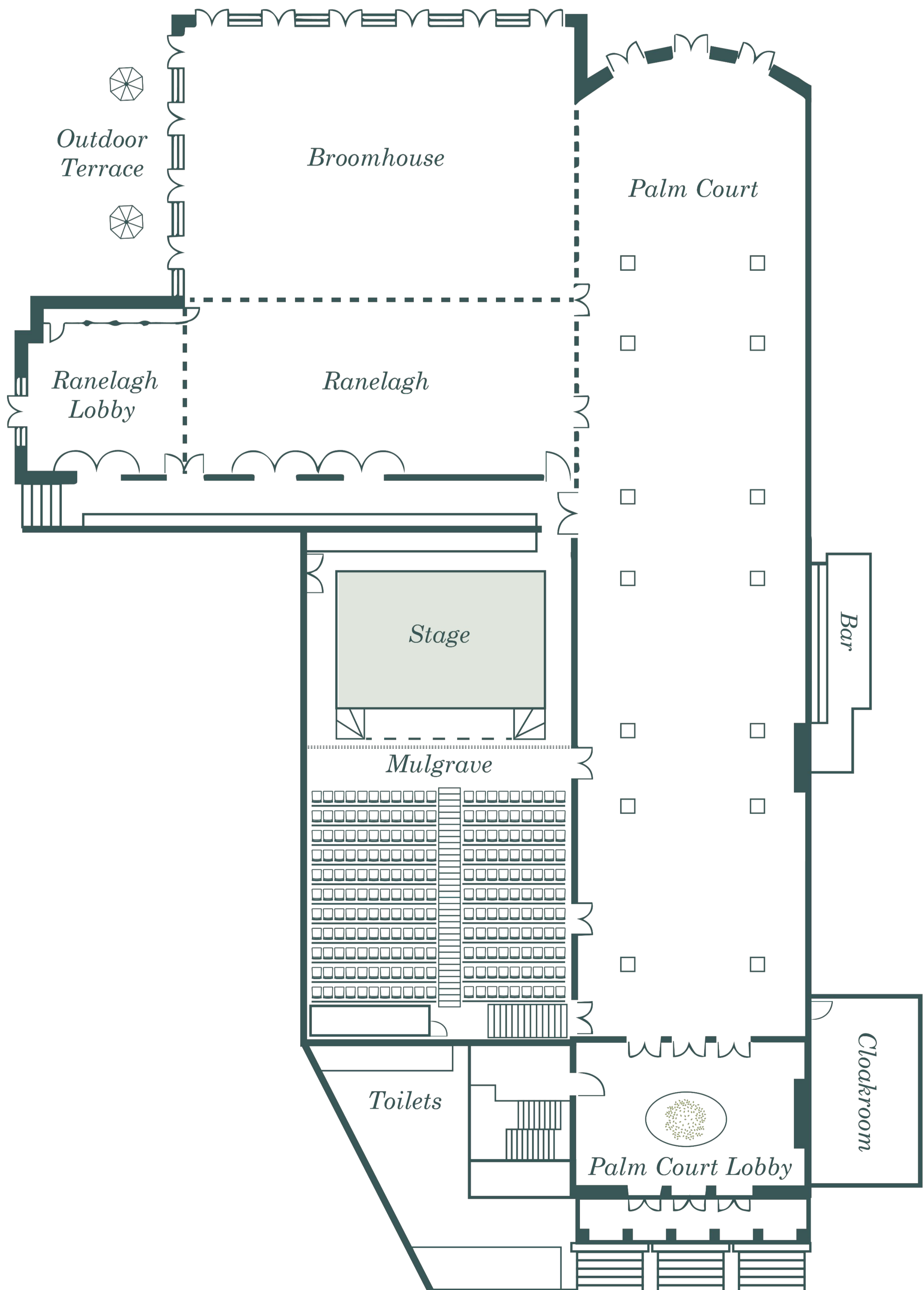


## HURLINGHAM EVENTS SPACES



### EXPLORE OUR SPACES

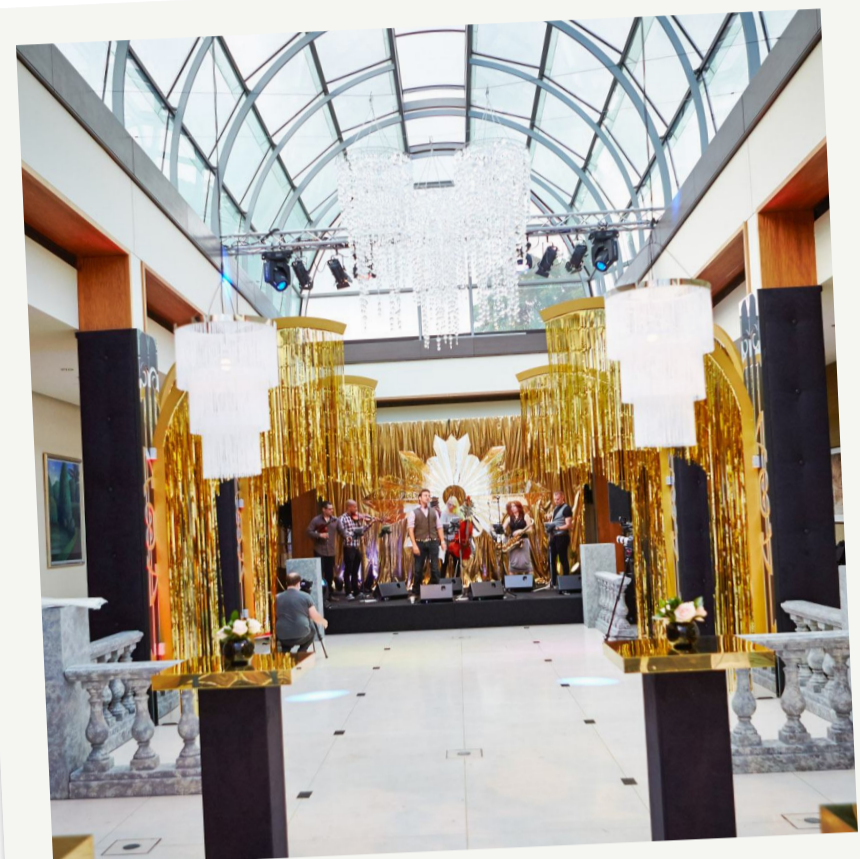
The Hurlingham Club offers unparalleled elegance and versatility for all manner of events in our award-winning event space. Marrying our historic Georgian Clubhouse with world-class contemporary facilities, we have long been trusted to host some of London's most prestigious events. Explore our fully customisable layout of connecting rooms, Terraces, and Sunken Garden below.





## PALM COURT

The heart of every event at The Hurlingham Club, Palm Court is flooded in natural light by day and starlight come nightfall, thanks to our 30-metre-long domed ceiling. From this dramatic focal point, let your event expand through our interconnected rooms before spilling out onto our sun-dappled Terraces and Gardens.



*Dancing*



*Party Setup*

### DETAILS THAT MAKE THE DIFFERENCE

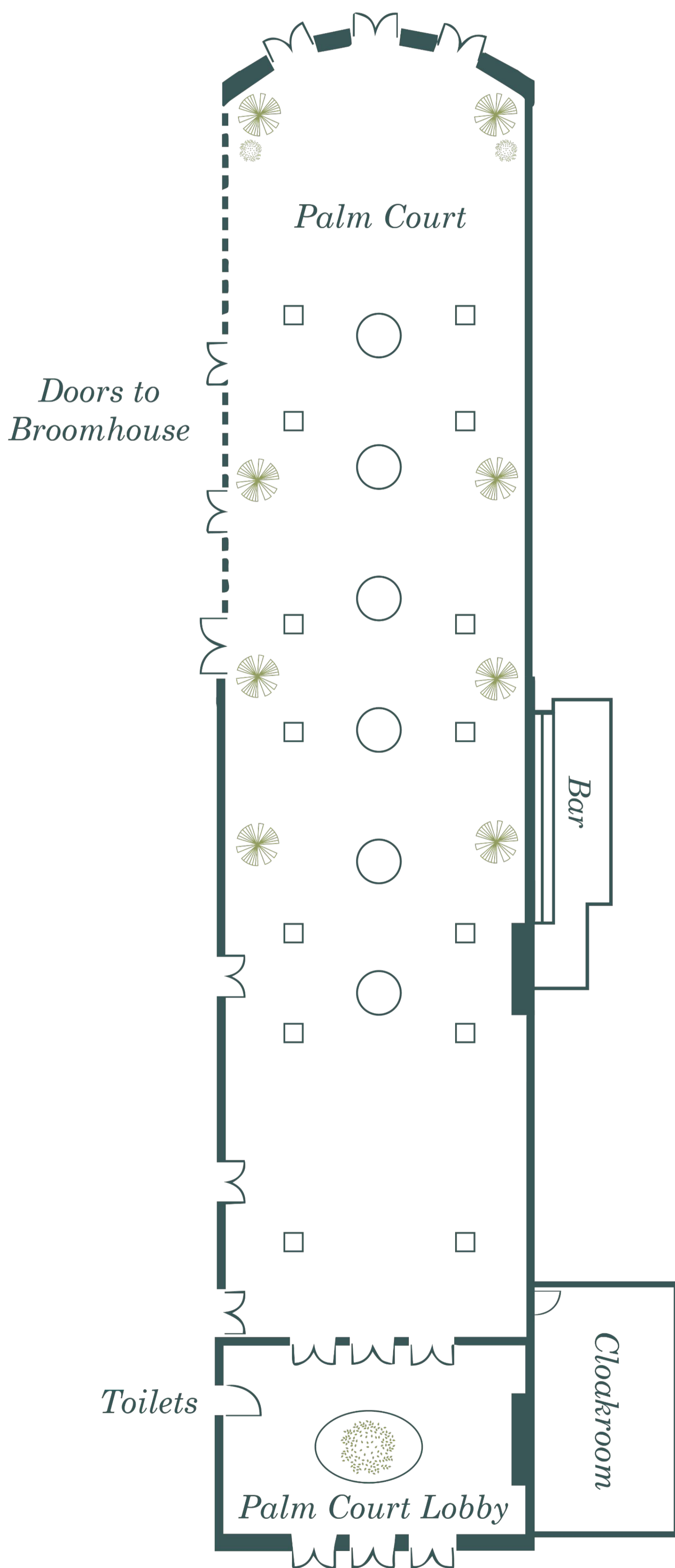
- Glass dome feature lighting
- Private bar
- Access to all banqueting rooms
- Removable soft furnishings
- Adjustable lighting
- Built-in PA



*Daytime Fun*



*Palm Court*



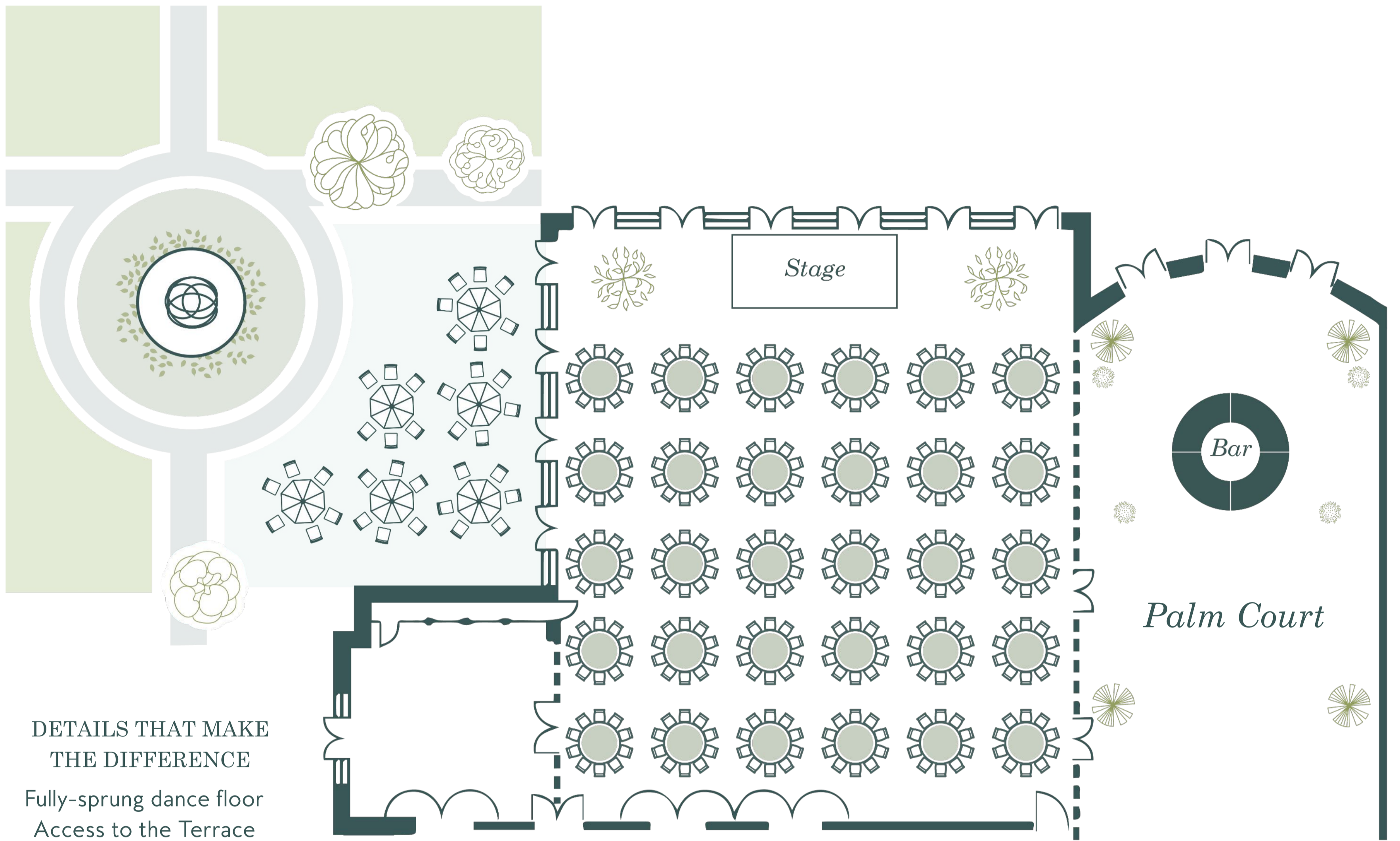
43.25m x 10.75m





## BROOMHOUSE SUITE

Overlooking the Club's spectacular Grounds, the Broomhouse Suite can be enjoyed as an extension of Palm Court to create a grand open space or sectioned off into two intimate break-out rooms. Comprising of the Broomhouse and Ranelagh Rooms, the space accommodates up to 300 seated guests, features floor-to-ceiling windows along two walls. For the utmost privacy, the room can be blacked out as required.



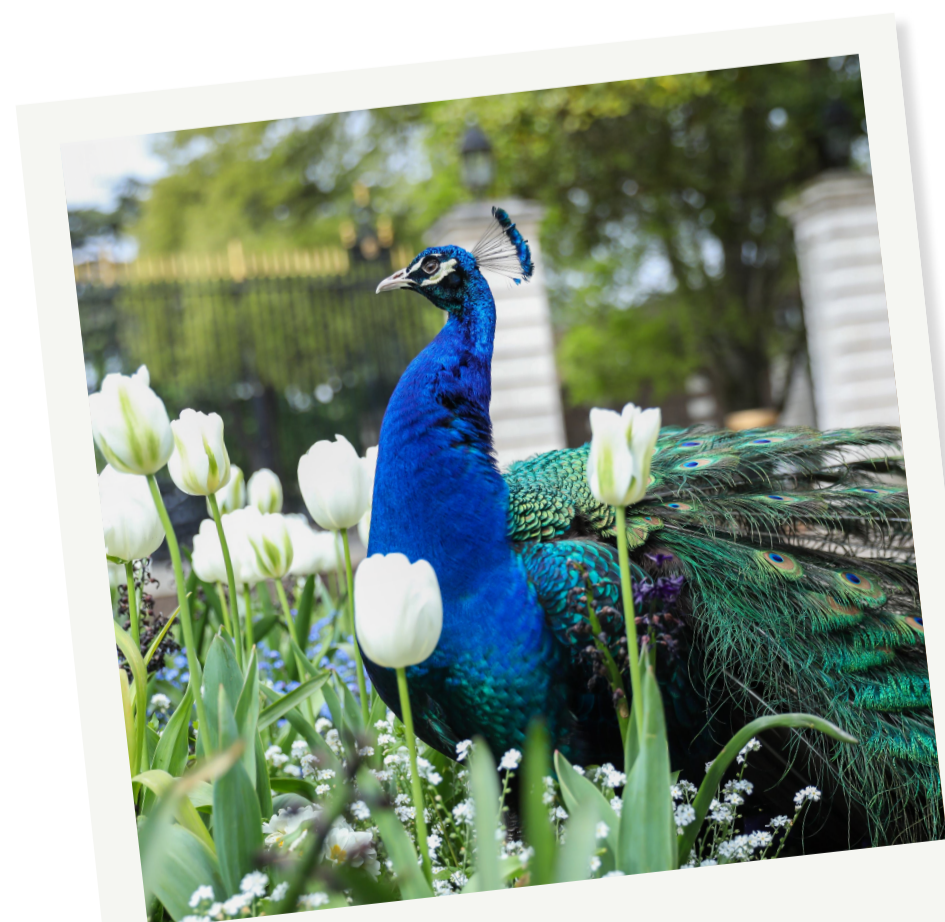
### DETAILS THAT MAKE THE DIFFERENCE

- Fully-sprung dance floor
- Access to the Terrace
- Removable floor coverings
- Air conditioning

18m x 19.5m

## THE TERRACE AND SUNKEN GARDEN

Nestled within our historic Grounds, the Terrace and Sunken Garden offer a tranquil setting for your guests to explore. Extending from the Broomhouse Suite, the Terrace provides a charming outdoor space for your guests to gather and unwind as they take in our manicured Grounds. As your guests mingle, they may even catch a game of croquet on our Front Lawns or spot our cricketers at play in their traditional whites, before taking a stroll to our vibrant Sunken Garden.



Peacock



Event Ready



Summer Dining



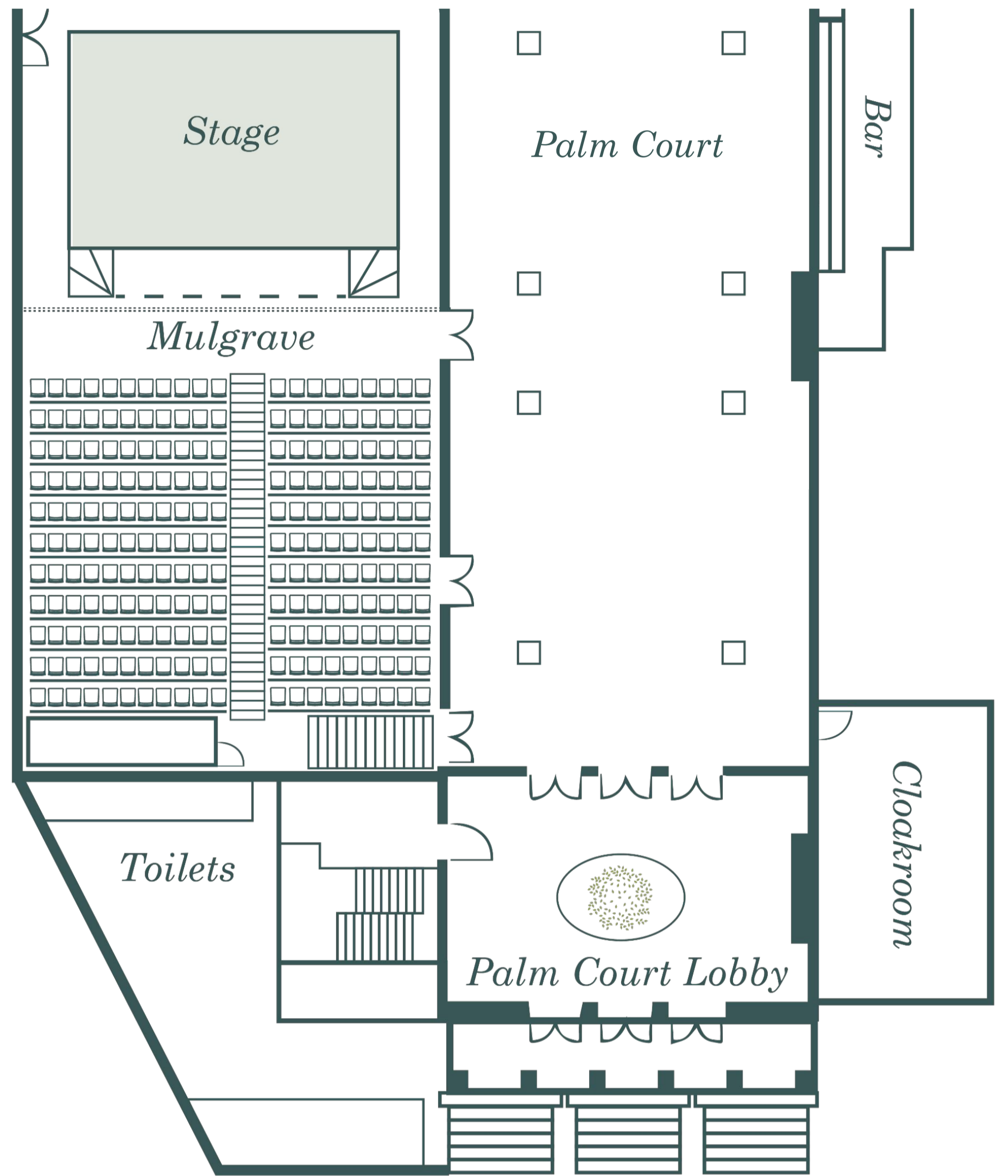
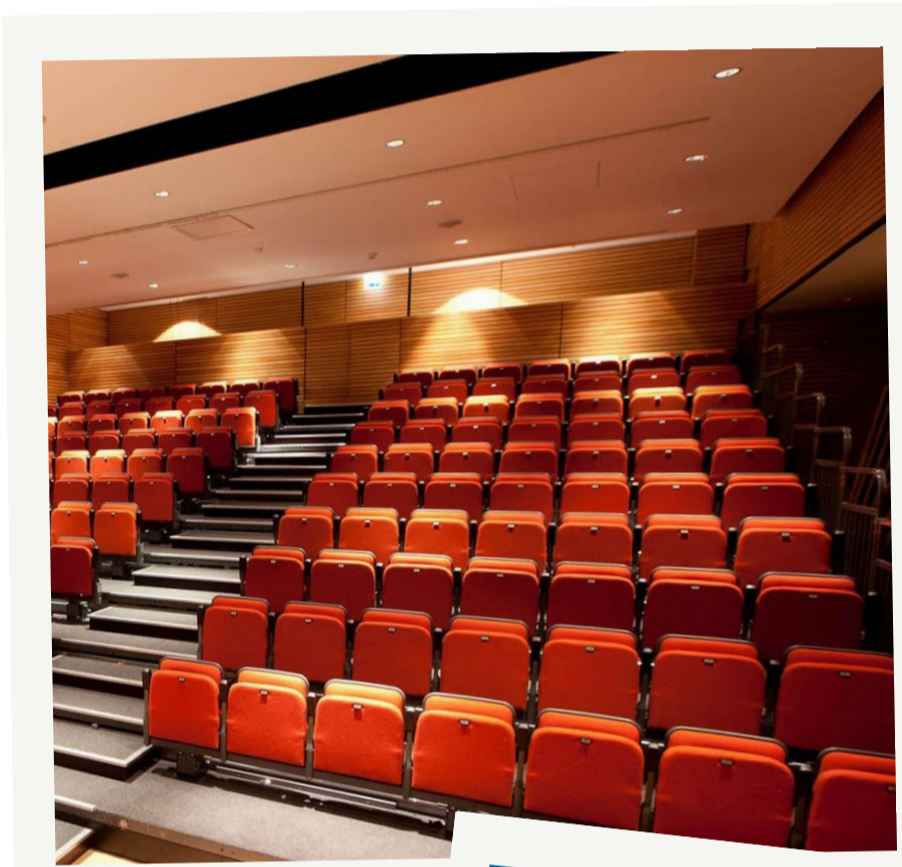


## MULGRAVE THEATRE

The Mulgrave Theatre provides the perfect blank canvas for presentations, lectures and conferences. An expansive auditorium featuring tiered seating and an extensive stage, the Mulgrave offers ample space for performances, lectures and screenings.

### DETAILS THAT MAKE THE DIFFERENCE

- Built in stage
- Tiered setup
- Dedicated terrace



11.75m x 10.5m

### CAPACITY CHART

|  | LUNCH / DINNER | DINNER & DANCE | RECEPTION | CABARET | THEATRE | RECEPTION |
|--|----------------|----------------|-----------|---------|---------|-----------|
| PALM COURT   | –              | 250            | –         | 250     | 400     | 280       |
| BROOMHOUSE SUITE<br><small>(BROOMHOUSE ROOM &amp; RANELAGH ROOM &amp; LOBBY)</small> | –              | 200            | 280       | 350     | 450     | 450       |
| PALM COURT & BROOMHOUSE SUITE<br><small>(ALL OPEN)</small>                           | –              | –              | 450       | 500     | 850     | 600       |
| BROOMHOUSE ROOM  | 60             | 130            | 150       | 210     | 350     | 340       |
| RANELAGH ROOM & LOBBY  | 80             | 80             | 120       | –       | –       | 120       |
| MULGRAVE THEATRE   | 40             | 80             | 60        | 100     | 200     | 180       |